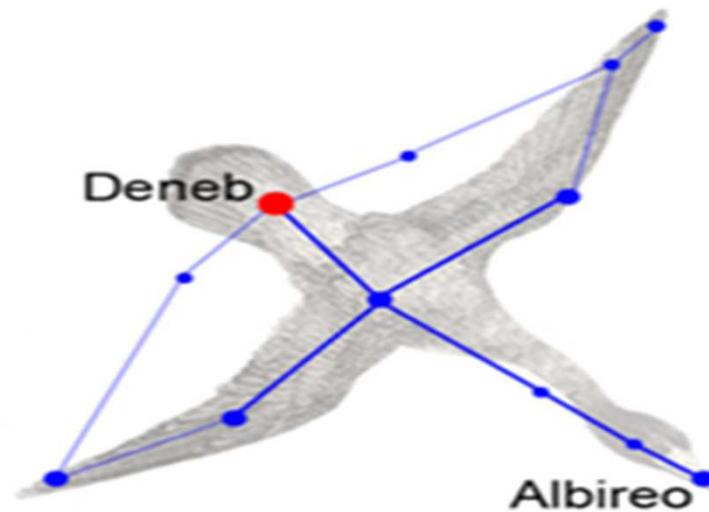


# Exercise Cygnus



**Lincolnshire's Resilience Forum**



**PREPARING FOR EMERGENCIES**  
WHAT YOU NEED TO KNOW

# Influenza Pandemic

- Identified as a tier one risk to the UK
- One of the nine enduring risks to Lincolnshire
- Cabinet Office has requested that the Department of Health lead the delivery of a national pandemic influenza exercise
- Lincolnshire Local Resilience Forum selected to take part

**Lincolnshire's Resilience Forum**



**PREPARING FOR EMERGENCIES**  
WHAT YOU NEED TO KNOW

# National Aim and Objectives

- **Aim**
  - To assess the preparedness and response to an influenza pandemic in the United Kingdom
- **Objectives**
  - To exercise organisational pandemic influenza at local and national levels in the United Kingdom
  - To exercise coordination of messaging to the public
  - To exercise strategic decision-making processes around managing the wider consequences and cross-government issues at both local and national levels during an influenza pandemic (such as excess deaths)
  - To exercise the provision of scientific advice, including SAGE, during an influenza pandemic

**Lincolnshire's Resilience Forum**



**PREPARING FOR EMERGENCIES**  
WHAT YOU NEED TO KNOW

# Exercise Scope

- Phase one (early stages) - health focused simulating the DH delivery board - 14 May 14
- Phase two - Command-Post Exercise (CPX) w/c 13 Oct 14
- Conducted over 3 days with phased participation to fit with a national battle rhythm
- SCG exercise on the first 2 days
- Telephone point of contact for the final exercise day

**Lincolnshire's Resilience Forum**



**PREPARING FOR EMERGENCIES**  
WHAT YOU NEED TO KNOW

# Scenario

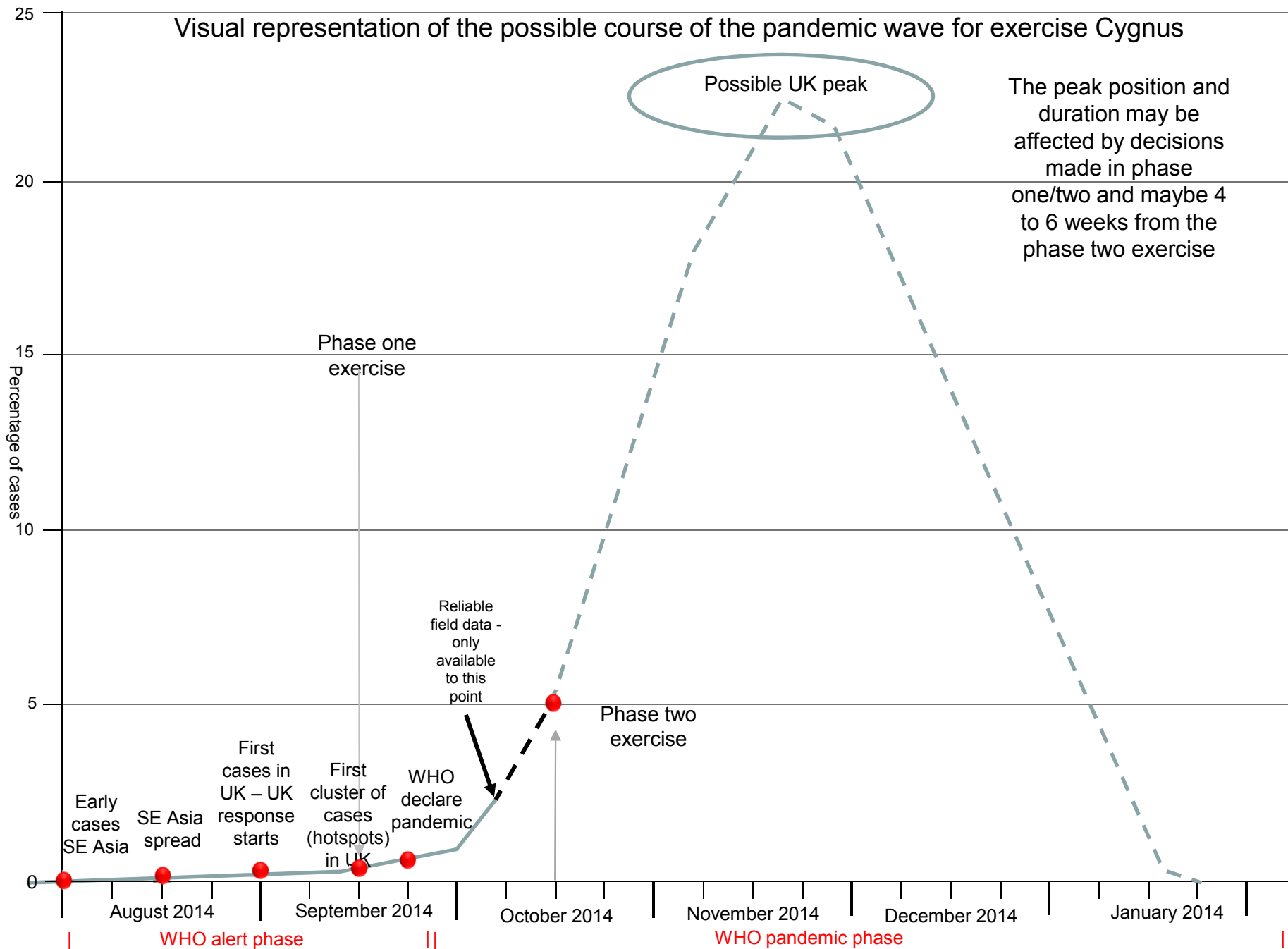
- New strain H2N2 first cases in SE Asia in June / July 14
- CDC identifies the virus as H2N2 and SE Asian countries notifies WHO of cases late July
- First cases in UK from returning travellers August 14
- Cluster of cases from September 14
- WHO declare a pandemic September 14
- UK peak – mid November 14
- 1<sup>st</sup> UK wave completed by mid to late January 15

**Lincolnshire's Resilience Forum**

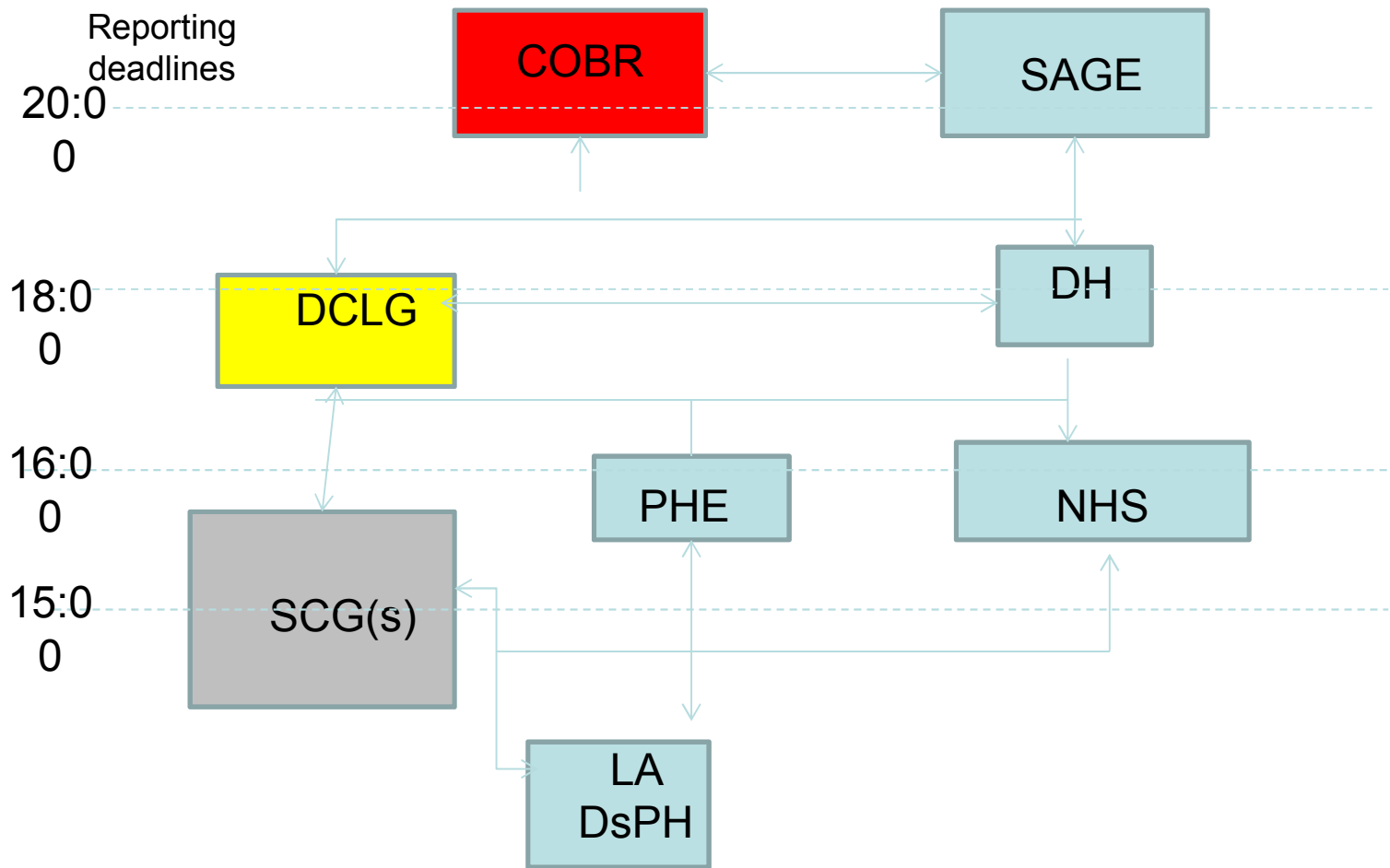


**PREPARING FOR EMERGENCIES**  
WHAT YOU NEED TO KNOW

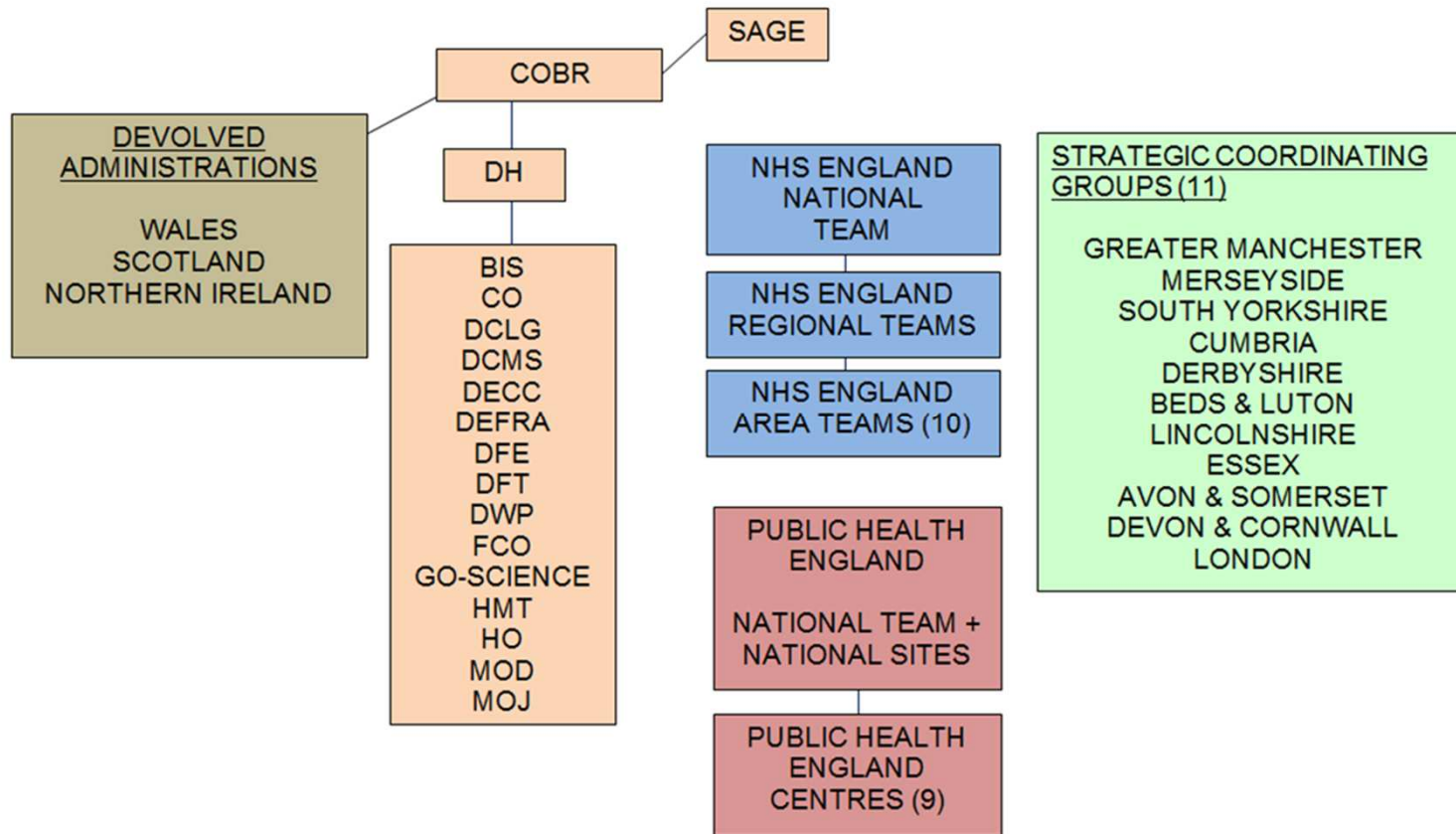
# Visual representation of the possible course of the pandemic wave for exercise Cygnus



# Exercise Cygnus: SCG Participation & Information Flow



# Participant Overview



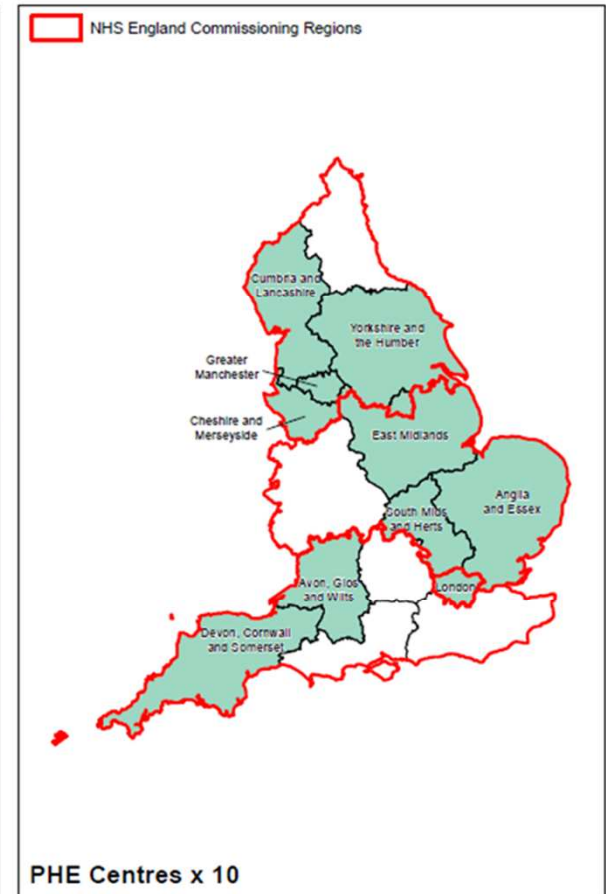
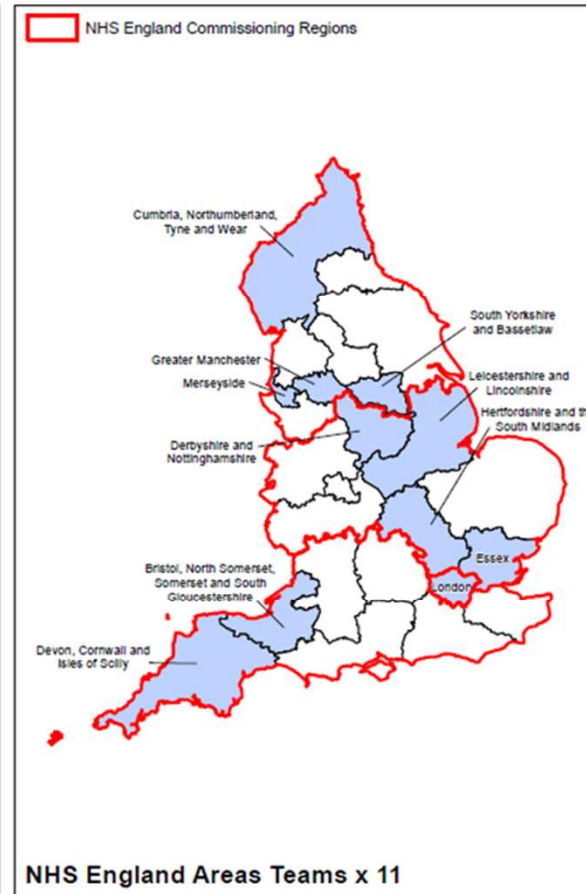
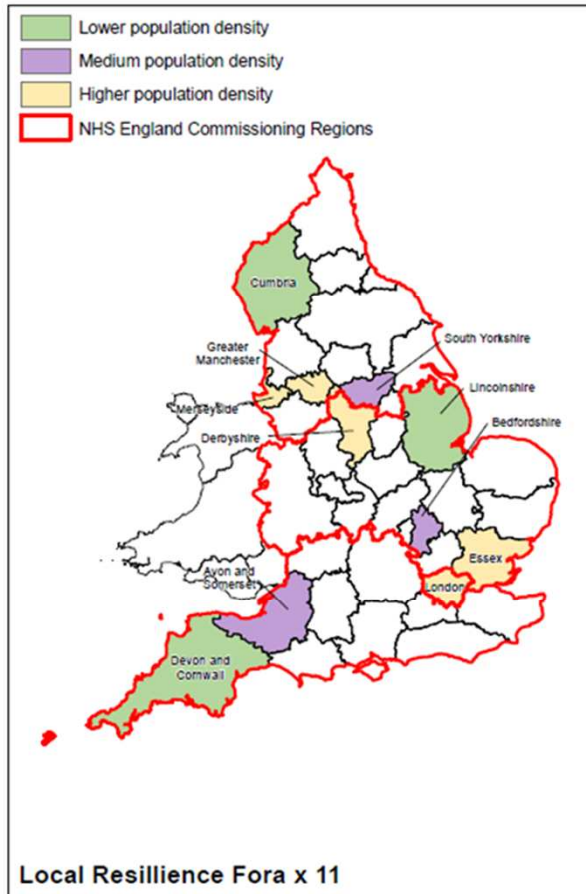
**Lincolnshire's Resilience Forum**



**PREPARING FOR EMERGENCIES**  
WHAT YOU NEED TO KNOW



# Geographical spread



## Lincolnshire's Resilience Forum



**PREPARING FOR EMERGENCIES**  
**WHAT YOU NEED TO KNOW**

# Local Strategic Objectives

- Test LRF multi-agency capability and capacity to respond to a severe pandemic outbreak
- Test cat 1&2 responders and voluntary sector business continuity planning to maintain critical functions during a severe pandemic outbreak
- Rehearse key people in strategic and tactical lead responder and multi-agency co-ordination roles
- Engage with health, social care and education providers in considering the impacts of resilience and preparedness for a severe pandemic outbreak
- Test partnership communications processes (with an emphasis on learning from recent exercises and emergency responses)

**Lincolnshire's Resilience Forum**



**PREPARING FOR EMERGENCIES**  
WHAT YOU NEED TO KNOW

# Exercise Cygnus

- Brief the Members of the Communities & Public Safety Scrutiny Committee for Lincolnshire on Exercise Cygnus
- To explain the Exercise design
- Opportunity for you to observe the Exercise
- Key learning resulting from the Exercise will be shared with the committee

**Lincolnshire's Resilience Forum**



**PREPARING FOR EMERGENCIES**  
WHAT YOU NEED TO KNOW